

Versa Analytics



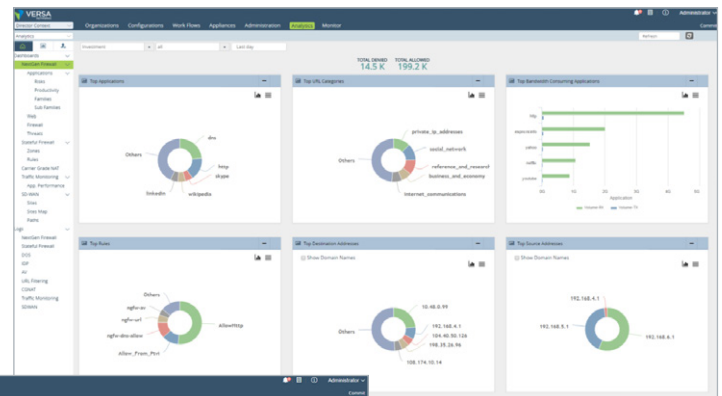
Product Description

Versa Analytics is purpose-built for Versa Secure Cloud IP Platform for use-case focused analytics covering SD-Routing, SD-WAN, SD-Security, and SD-Branch. It is a rich near real-time big data solution that provides visibility and control, base-lining, correlation, prediction and feedback loop into Versa software solutions. It provides near real-time and historical search, reports on usage patterns, trends, security events, and alerts. Versa Analytics analyzes large amounts of data sent from FlexVNFs to present critical data points as actionable analytics and reports. Tight native integration with Versa FlexVNF ensures optimized storage, search and performance.

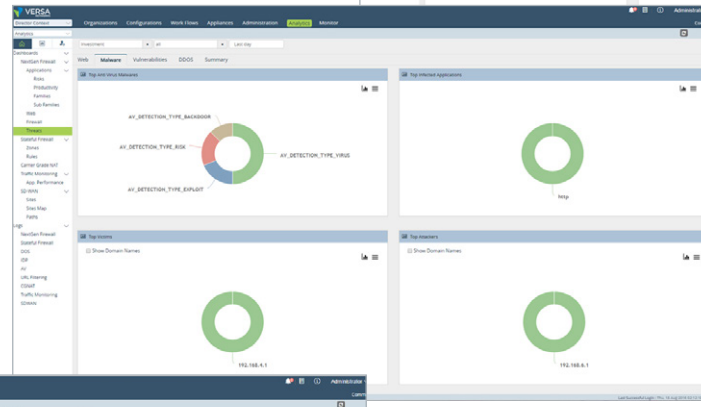
Versa Analytics has built-in multi-tenancy that enables a single cluster to provide service for hundreds of customers, enabling deployment flexibility and economy of scale. It tightly integrates with Versa Director for complete role-based access control. It is operations-ready and supports standard protocols and log formats, such as Syslog and IPFIX, making it compatible with existing SIEM, monitoring, and reporting systems. Versa Analytics is extensible and flexible via REST APIs

The comprehensive and native capabilities reduces costs and simplifies deployments and data analysis by reducing the dependency on various 3rd party data analytics platforms. For multi-vendor environments, Versa Analytics interoperates with well-known performance management applications and 3rd party services.

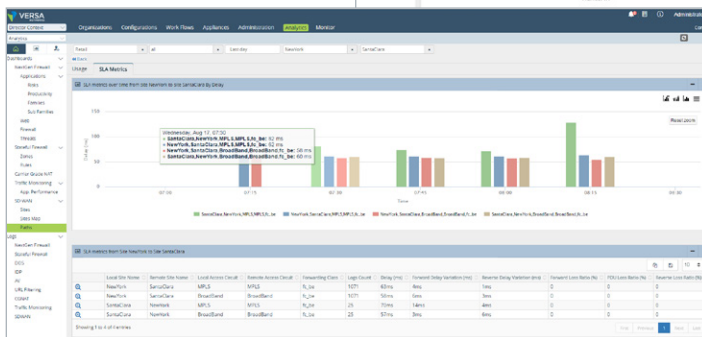
The result is carrier-grade, multi-tenant big data analysis and visibility for realizing the full value proposition of Versa software-defined solutions.



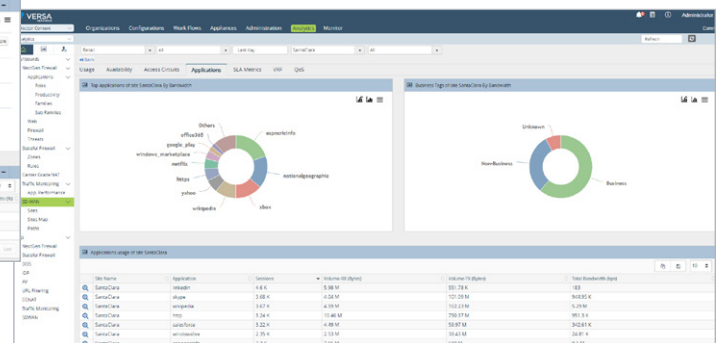
Versa Analytics Dashboard



Versa Analytics Threats Dashboard



Versa Analytics SLA Metrics Dashboard



Versa Analytics Top Applications Usage (Site View)

Product Features

<p>Data Logging Framework</p> <p>Highly scalable, reliable, optimized, policy-driven data logging framework for all Versa services</p> <p>Multiple transports</p> <p>Multiple log formats - Netflow, IPFIX, syslog, PCAP support</p> <p>Streaming of logs to one or more 3rd party collectors</p>	<p>Network Reports</p> <p>Traffic reports per site: availability, bandwidth usage per access circuit, bandwidth usage per application, latency/loss, QoS per access circuit</p> <p>Multi-site reports: connectivity, bandwidth usage and SLA metrics between sites</p> <p>CGNAT reports: NAT events, pool utilization etc.</p>	<p>Search</p> <p>Multi-column search with drilldown</p> <p>Generic and custom queries</p> <p>Correlation searches</p>
<p>Reports & Analytics</p> <p>Real & historical time series log event reporting for various Versa VNFs</p> <p>Traffic usage/protocol anomaly detection through trend lines and confidence band</p> <p>Dynamic WAN bandwidth measurements with historical analysis</p> <p>Prediction-based on extrapolation of trending data</p> <p>Application performance reports</p> <p>Ad-hoc and scheduled reports</p> <p>Predefined and custom report templates</p> <p>Report export formats: csv, pdf, xls, email notification</p>	<p>Security Reports</p> <p>Firewall reports per tenant: top rules, zones, source, destination by IP/domain name/geo location, ports, protocols, session duration, QoS, DDoS and Flood detection</p> <p>Application reports: top L7 applications by risk, productivity, family and sub-families based on sessions, volume and throughput</p> <p>Web traffic reports: top web traffic by URL categories and reputation</p> <p>Threat profile reports: URL filtering and captive portal actions, IDS/IPS, anti-virus, SSL certificate anomalies, etc.</p> <p>Forensics: packet capture for known/unknown applications and detected vulnerabilities</p>	<p>Anomalies</p> <p>Support of anomaly detection in traffic pattern/usage</p> <p>Support for custom applications to detect anomalies and take actions (send traps, program policies, etc.)</p>
		<p>GUI</p> <p>Dashboard views for SD-WAN, security, vCPE functionality per tenant, per FlexVNF</p> <p>Visualization using charts, real-time views, maps, grids</p> <p>Drilldown support to analyze data instantly for a given time range, detect trends and anomalies</p> <p>Automatic data enrichment</p> <p>Flexible reporting framework</p> <p>Google Maps support</p>
		<p>Management</p> <p>Role-based access control</p> <p>REST APIs for Versa and 3rd party Apps</p> <p>Historical log archival and cleanup</p>

System Requirements

In production networks, we recommend using bare metal for running Versa Analytics functionality to get optimal scaling and performance.

Recommended Sizing Requirements for Versa Director										
Qty of Branches	Qty of Tenants	Deployment Option	OS	Processor	Servers	Cores	Storage Capacity	Storage (HDD) type	DRAM	Network ports per CPU
2500	500	Application on Ubuntu (Ubuntu Package)	Ubuntu 14.04	Intel Xeon 64 bit	6 x 1 Socket server for Database nodes	16 cores	2 TB	SSD Preferred	128 GB per socket	2
					4x 1 Socket servers for Log Collectors	4 cores	128 GB		8 GB per socket	
1000	200	Virtual Machine			4 x 1 Socket server for Database nodes. Log Collectors integrated	16 cores	2 TB		128 GB per socket	
							1 TB		64 GB per socket	
500	100									

** Resource requirements are for 1 search and 1 Analytics node deployed in Non-HA. Versa recommends HA deployment for best performance and availability. Consult the latest Versa Analytics release notes for updated information related to resources, performance and configurations.

About Versa Networks

Versa Networks is a leading innovator in the SD-WAN and SD-Security market. Versa’s solutions enable service providers and large enterprises to transform enterprise WAN’s to achieve unprecedented business advantages. Versa’s carrier-grade cloud-native software platform provides unmatched agility, cost savings and flexibility, transforming the business of networking. The company is backed by premier venture investors Sequoia, Mayfield, Artis Ventures and Verizon Ventures. For more information, visit <https://www.versa-networks.com>

Follow us on  @versanetworks.

